

21st
Annual

NORTH STAR CLASSIC



★ DECEMBER 4-6, 2020 ★

*Open to the
Public*

N.D. WINTER SHOW
EVENT CENTER

NORTH STAR
CLASSIC

VALLEY CITY
NORTH DAKOTA





Join us February 28-March 6, 2021
for the 84th Annual
North Dakota Winter Show

Kickoff Concert Feb. 27
Commercial Exhibits
Ranch Rodeo

MN/ND High School Rodeo Challenge
Pony / Horse Pull
PRCA Rodeo Performances
Auctioneer's Contest
Craft & Antique Show
Free Stage Shows
And More!

8 Days of Fun!



**SAVE
THE DATE!**

...
**North Star Classic
December 3-5,
2021**

WINTER SHOW UPCOMING EVENTS - 2021 -

JANUARY

Central ND Rabbit Breeders Assoc. (ARBA)
Show – Jan. 8-10
Dakota Territory Gun Collector Show – Jan. 8-10

FEBRUARY

Dakota Power Bull Sale – Feb. 6-8
NDWS Concert – Feb. 27
NDWS – Feb. 28

MARCH

North Dakota Winter Show – Mar. 1-6

APRIL

ND Jr. High School Rodeo – Apr. 17-18

MAY

NDQHA Horse Show – Date TBD

JUNE

Barnes Co. 4-H Horse Clinic – Date TBD
Barnes Co. 4-H Horse Show – Date TBD
NDQHA Horse Show – Date TBD

JULY

4-H Achievement Days – Date TBD

AUGUST

Appaloosa Horse Show – Aug. 20-22

SEPTEMBER

NDQHA Horse Show – Sept. 10-12
ND High School Rodeo – Sept. 24-26

OCTOBER

Great Midwest Horse Show – Date TBD
Dakota 50/50 – Oct. 15-17

**PLEASE BRING CATALOG TO EVENT.
QUANTITIES ARE LIMITED.**

*Advertisements in this brochure do not constitute
NDWS endorsement of any advertised
business, product or service.*

*Photos & Recordings Notice:
By attending these events, you possibly could be photographed,
included in video footage, or otherwise recorded for
NDWS's promotional purposes.*

Cover photos credit: Sherry Geyer



Cattlemen & Cattlewomen, I can't tell you how excited I am to say it's North Star Classic time again! This year marks the 21st annual December cattle show at the NDWS. I feel as if this year's planning may have gone something like the very first year, full of uncertainty. I am certain there will be a show. I am certain we will have a great show with the addition of Kelcey Hoffman as the NSC Show Manager. I am certain this show has attracted new cattlemen and women. I am certain we will have changes. I am certain it is just what we all need and that it will be a safe and successful weekend for all.

Back by popular demand is the Cattlemen's Ball & Sale in the South Exhibit Building of the NDWS Main Event Center. We will again be hosting a prime rib supper, raffle drawings totaling \$6250, elite cattle & trip/merchandise auction lots, a cash bar, door prizes and a Branding Party. Let's Brand the Winter Show! Please bring your cattle brand and \$100 to leave your mark on the walls of the NDWS atrium. We want to honor our cattlemen and local ranchers with this display for all to see. On behalf of the Livestock Committee I would like to thank our cattle lot consignors Lodoen Cattle Co., Five Star Ranch, JK Angus, Nord Angus, Marin and Garner Eeg, Brent Wirth and those that donated trips and merchandise. We have some great packages to choose from. Country Christmas is also back for this event with more vendors than ever! This will be open to the public on Saturday. Shop local, shop small business.

Our 2020 Livestock Honoree is Billy Hoffman of Wheatland, ND. We will recognize him on Friday, December 4th during the selection of our Supreme Heifer & Bull and later at the Cattlemen's Ball & Sale. Billy and his family have been long time supporters and exhibitors of the North Dakota Winter Show and the North Star Classic since its beginning in 1999. We are very thankful for Billy's involvement in our organization over the years.

The weekend will be completed with multiple breed sales, fitting clinic, junior show, commercial ag vendors and Country Christmas. Be sure to check out the full schedule on page 5.

I would like to thank all the cattlemen that have committed lots not only to the Cattlemen's Ball & Sale but also to the different breed sales on Saturday, December 5th. Please take time to look over these lots listed in the catalog. Many good cattle to choose from.

Last but not least, thank you to our show sponsors, advertisers and buyers. This event could not happen without everyone's support.

Please join us at the 21st Annual North Star Classic event! I can't wait to fill the barn with cattle again!

See you in December,

Tesa Klein



TABLE OF CONTENTS

Welcome3
 Staff & Board4
 Schedule of Events 5
 Thanks to Our Sponsors 8
 Meet the Judges10
 North Star Classic Sale14
 Country Christmas19
 Cattlemen’s Ball20
 2019 Memories30
 2020 Livestock Honoree32
 2019 Champions 33
 Hereford Sale36
 NSC Terms & Conditions50
 2020 Sponsors & Advertiser’s Index51

STAFF & BOARD



OFFICE STAFF

Virginia Nelson, Office Manager
 Tesa Klein, NDWS Manager
 Kelcey Hoffmann, NSC Show Manager



BOARD OF DIRECTORS

President Whitney Vogel
 VP Doug Muske
 Royce Kinney • Dave Maasjo
 Tim Ost • Kevin Christensen
 Jim Nelson • Pete Paulson
 Dana Didier • Bill Carlblom
 Nick Holm • Dan Donnelly



BARN CREW:

Royce Kinney & Steve Klotzbach





2020 NORTH STAR CLASSIC

Schedule of Events December 4-6

Wednesday, December 2, 2020

Earliest arrival of cattle 12:00 p.m.

Friday, December 4, 2020

Open Shows

Show will begin at 8:00 a.m.

Breeds will run consecutively in the following order:

Main Arena 1

Chi/Chi-Influenced
Galloway
Sim-Influenced
Charolais
Charolais Composite
Simmental
Maine/Mainetainer
Gelbvieh
Red Angus
Limousin

Main Arena 2

Angus
Mini Hereford
Hereford
Shorthorn
Commercial
Shorthorn Plus

A minimum of five entires need to be shown per breed; if not breed will show in commercial

3:00 p.m. Livestock Honoree Recognition.....Main Arena
3:00 p.m. Supreme Individuals SelectionMain Arena
5:00 p.m. No-Host SocialSouth Exhibit Bldg.
6:00 p.m. Cattleman's Ball Supper &
Sale to followSouth Exhibit Bldg.

(Ticket required for Ball, Sale, Social & Auction)

Saturday, December 5, 2020

Pen Shows/Sale Day

9:00 a.m. Fitting ClinicTBD
10:00 a.m. "Fairest of Them All"Main Arena
12:00 p.m. Pen ShowsMain Arena

Followed by the Supreme Pen of 3 Selections

Hereford
Red Angus
Limousin
Angus
Shorthorn
Charolais
Gelbvieh
Other Breeds

All heifer pens will be shown first, in the order of breeds listed, followed by the bull pens.

A minimum of two entires need to be shown per breed; if no breed will show in "other breeds."

2:00 p.m. NSC SaleSouth side of Main Bldg.
3:00 p.m. Hereford Sale.....South side of Main Bldg.
5:00 p.m. Jr. Prospect Steers/Heifer Weigh-In
5:30 p.m. Junior ShowmanshipMain Arena
PeeWee, Junior, Intermediate, Senior Divisions

Sunday, December 6, 2020

Junior Shows

Show will begin at 8:00 a.m.

Breeds will run consecutively in the following order:

Main Arena 1

Red Angus
Gelbvieh
Maine/Mainetainer
Commercial Heifers
Charolais
Charolais Composite
Chi/Chi-Influenced
South Devon
Limousin
Angus

Main Arena 2

Hereford
Mini Hereford
Sim-Influenced
Lowline
Shorthorn
Shorthorn Plus
Simmental

Following Breed Shows:

Overall Junior Supreme Heifer Show
1/2 Hour Break

AgCountry Junior Prospect Steer & Heifer Showdown

Late Entry & Stalling Deadlines:

Open Show:

5:00 p.m. • Thursday, December 3

Pen Show:

2:00 p.m. • Friday, December 4

"Fairest Of Them All" Show:

4:00 p.m. • Friday, December 4

Junior Show & Showmanship:

4:00 p.m. • Saturday, December 5

All Entry Forms must be postmarked by November 17th to enter without a late entry!

Weigh-In Times:

Pen Show Bulls & Heifers:

Weigh in prior to entering ring

Jr. Prospect Steers & Heifers:

5:00 p.m. • Saturday, December 5

Schedule is Subject to Change

Please contact the North Dakota Winter Show Office with questions or concerns:

Phone: 1-800-437-0218

E-mail: ndws@northdakotawintershow.com

f Follow us on Facebook: **📷 Find us on Instagram:**
North Star Classic NDWinterShow
North Dakota Winter Show

RKS Sales & Service

- Commercial & Private
- Full DOT Inspections Available
- Service Truck
- Truck & Trailer Service and Maintenance
- Sales & Service for all your tire needs
- 24 Hour Service

Royce Kinney

701-840-0522

701-845-0229 (Office)

615 2nd St NW - Valley City

Serving Valley City and the Surrounding Area

MIRGA

Maple River Grain & Agronomy, LLC

1630 1st Ave S. | Casselton, ND

701-347-4465



maplerivergrain.com



ND Locations:

*Casselton | Peak | Chaffee | Leonard
Lynchburg | Prosper*

MN Locations:

*Barnesville | Rothsay | Dilworth
Kragnes | Sabin*



YOUR MARKET FOR

**HOLSTEIN STEERS • BULLS
FED COWS • LEAN COWS**

MEET OUR TEAM

Mike Baczwaski

Gibbon, NE • 800-445-0042
Fed Cows » Lean Cows » Bulls

Chad McQuade

Yankton, SD • 605-668-4275
Lean Cows » Bulls

Tyrel Lembke

Long Prairie, MN • 651-256-6115 • 877-300-9298
Lean Cows » Bulls

Dean Derricks

Green Bay, WI • 920-436-6529
Holstein Steers » Fed Cows

Tim Schiefelbein

Kimball, MN • 320-398-2700
Cattle Contracting



AMERICANFOODSGROUP.COM

OHR Red Angus presents ~

Family Traditions

Red Angus Bred Female Sale

At the ranch ~ Argusville, ND ~ Noon meal ~ 1:00 Sale

Saturday

November 28, 2020

Saturday

Selling 90 Lots!

Bred Heifers, Young Cows, Commercial Breds, Heifer Calves, Embryos & Semen!

Family traditions run deep in our herd! We stack top producing cow families to ensure productivity & top performance!

Bred Heifer



EPDs:
BW -0.5
WW 80
YW 127
Milk 32
REA .35
Marb .55

54G - Merlin x Buckshot

Bred Heifer



EPDs:
BW -0.1
WW 52
YW 83
Milk 29
REA -.21
Marb .17

44G - Copper Saga x Gold Trust

February Heifer



EPDs:
BW -2.9
WW 62
YW 96
Milk 32
REA .08
Marb .38

35H - Merlin x Dakota Trust

Bred Heifer



EPDs:
BW 0.4
WW 54
YW 99
Milk 28
REA -.14
Marb .25

17G - Copper Saga x High Tide

Bred Heifer



EPDs:
BW 1.6
WW 70
YW 110
Milk 25
REA .09
Marb .12

164F - Vessel x Trust

February Heifer



EPDs:
BW -1.7
WW 73
YW 114
Milk 35
REA .23
Marb .41

13H - Merlin x Game Plan

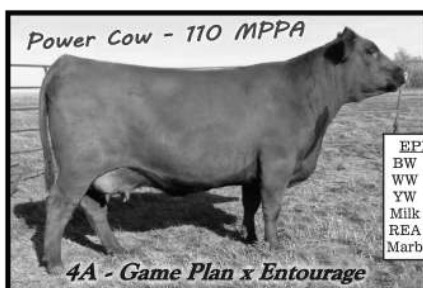
Bred Heifer



EPDs:
BW 1.0
WW 53
YW 89
Milk 31
REA -.05
Marb .17

21G - Copper Saga x Game Plan

Power Cow - 110 MPPA



EPDs:
BW -0.1
WW 64
YW 99
Milk 30
REA -.10
Marb .37

4A - Game Plan x Entourage

Flush sells



EPDs:
BW 3.5
WW 60
YW 101
Milk 29
REA -.03
Marb .18

119Y - Trust x Robin Hood

Call for catalog:

RED OHR ANGUS

Ed & Jeanne Olson - Carl & Lindsay Olson
16068 24th St SE - Argusville, ND 58005

www.olsonredpower.com

Breeding High Quality Registered Cattle Since 1936!

This sale will be broadcast live on the internet.
DVAuction
Broadcasting Real-Time Auctions

Polled Herefords

Ed's cell 701-238-3601
Carl's cell 701-361-0684

Olson's **Red Power**
Performance Tested Bull Sale

At the ranch ~ Argusville, ND ~ Noon meal ~ 1:00 Sale

February 18, 2021

Red Angus & Polled Herefords - Bulls & Heifers

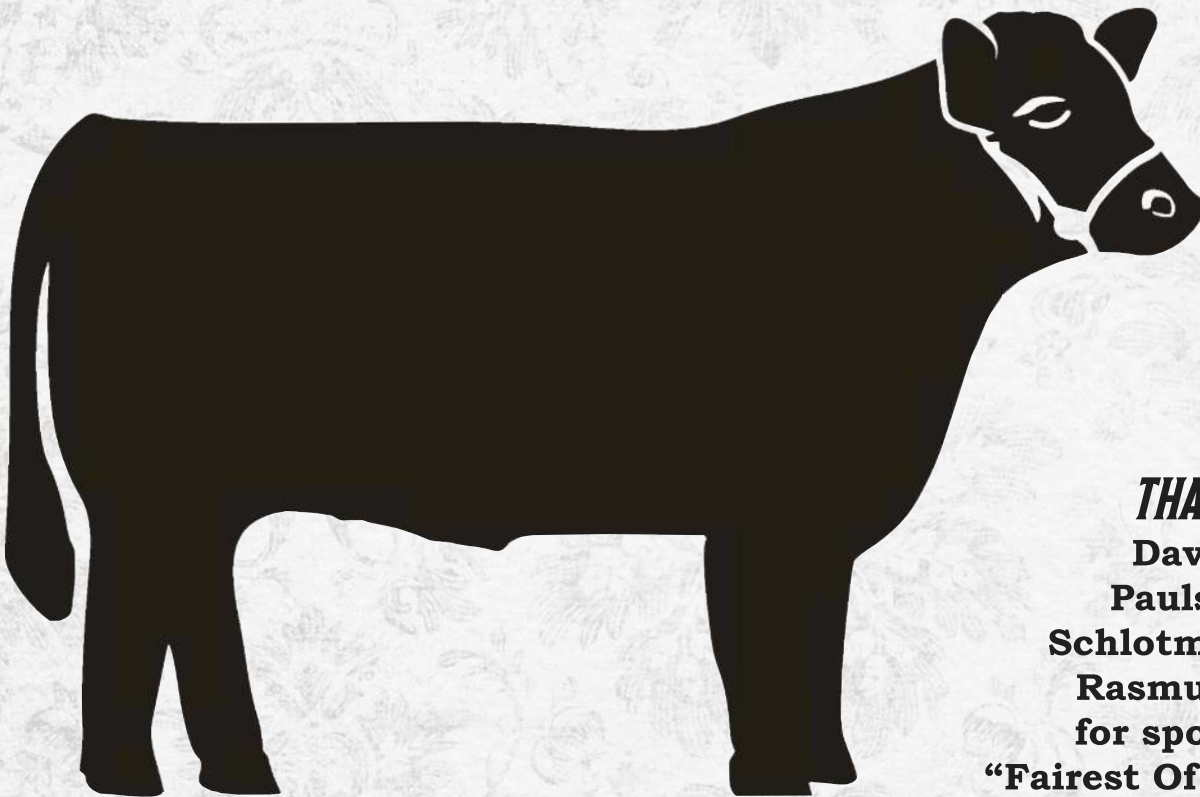
"We Breed Excitement!"

2020 SPONSORS

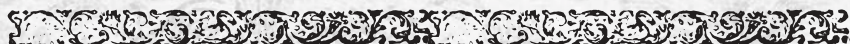
THE NORTH STAR CLASSIC WOULD LIKE TO THANK THE FOLLOWING SPONSORS FOR THEIR GENEROUS CONTRIBUTIONS!

AgCountry Farm Credit Service
American Food Groups
AmericInn
Bank Forward Insure Forward
Cattle Business Weekly
Central Plains Ag
Columbia Grain
Dacotah Bank
Double Bar T Feeds
Eagles
Farm & Ranch Guide
Farm Forum
Long Ranch Design
Maasjo Farms

Maple River Grain & Agronomy
ND Farm Bureau
ND Livestock Alliance
Paulson Farms
RKS Sales & Service
Rasmusson Farms
Schaefer Vermeer Equipment
Schlotman Farms
Schmitz Family
Select Sires
Sullivan's Supply
Valley City Vet Clinic
VC Conv. & Visitors Bureau
Western Ag Reporter



THANK YOU...
Dave Maasjo
Paulson Farms
Schlotman Livestock
Rasmusson Farms
for sponsoring the
“Fairest Of Them All” Show
on Saturday, December 5!



FARM & RANCH[®] GUIDE

www.farmandranchguide.com

PROUD SPONSOR OF THE NORTH STAR CLASSIC!



Kirby Goettsch
Livestock Sales Representative
Cell: 605-380-3939
email:
kirbyg.frg@gmail.com

Whether you're buying or selling, no other publication gives you more livestock coverage in the northern prairie states.

Farm & Ranch Guide supports the livestock industry, not only through the annual Livestock Guide and the regular issues of Farm & Ranch Guide, but through support for area livestock shows and events.

Our full service livestock services department has been around since the beginning of Farm & Ranch Guide over 35 years ago.

Talk to Kirby Goettsch about your upcoming sale or any livestock advertising needs you may have.

Join the hundreds of livestock producers who have come to rely on Farm & Ranch Guide to assist in their marketing efforts.



Ask Us About Our Six Other Livestock Publications

Midwest **MARKETER**
www.midwestmarketer.com

Tri-State **NEIGHBOR**
www.tristateneighbor.com

MINNESOTA **FARM** GUIDE
www.minnesotafarmguide.com

Midwest **MESSENGER**
www.midwestmessenger.com

THE **Prairie Star**
www.theprairiestar.com

TODAY'S **PRODUCER**
www.todaysproducer.com

MEET THE 2020 JUDGES

Scott Bayer is from Ringle, WI where he owns and operates TC Reds and Country Lane Farm with his family. Scott and his family hold several production sales throughout the year, selling breeding stock nationwide. He and his family have successfully raised and shown Champions on many levels, including having both Red Angus and Angus champions in Louisville, Denver, many State Fairs and the National Jr. Red Angus show. Over the years Scott has been honored to have judged many shows, including the National Western Stock Show, American Royal, North American Livestock Exposition, along with numerous State Fairs and regional shows. Scott will be judging the Open Show on Friday along with the Pen Show on Saturday.

Ty Bayer will be judging the Open Show on Friday and the Pen Show on Saturday. Ty attended Junior College at Lincoln Land Community College in Springfield, IL, where he was an active member of the livestock judging team. After Junior College, Ty transferred to Colorado State University where he graduated in 2015 with a degree in Animal Science. While attending CSU, Ty was a member of a successful livestock judging team that had many top 5 finishes including being named the Champion Team at the American Royal in Kansas City. After graduation from Colorado State University, he returned home to the family operation in Wisconsin. He is from Ringle, WI where Ty and his family currently run TC Reds, a 140 head Angus and Red Angus operation. Their operation have bred and shown many state and national champions. Ty has judged many shows at all levels, including the National Western Stock Show.

Scott Bush is from Britton, SD and will be one of our judges for the showmanship competition on Saturday night and the junior show on Sunday. Scott and his wife, Jo, live on the family farm. They have two children, Brittany and Tyler. Scott is the 5th generation at Bush Angus where they run a herd of 200 registered angus cows. The Bush Family has been raising angus since 1917. Throughout the generations their family has enjoyed the show ring aspect of the business as well.

Scott is a member of the American Angus Association and has been an active member of the South Dakota Angus Association for many years. He has had the opportunity to judge many shows across the United States and has traveled internationally to judge as well. Outside of the cattle arena he enjoys getting in a round or two of golf when time allows.

Bush Angus invites you to stop in and visit if you are in the area. They hold their annual bull sale the last Saturday in February and they would love to see you there!

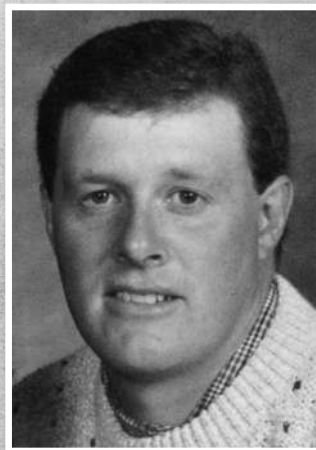
Tyler Bush from Britton, SD is the 6th generation of his family's operation where they show and raise purebred angus cattle and host an annual bull sale every February. Tyler will be joining us this year to evaluate the junior show on Sunday and the showmanship competition on Saturday!

Tyler's judging career began in 4-H where he went on to judge at several national contests. He then went on to judge at the collegiate level, first at Hutchinson Community College and presently at South Dakota State University. The opportunity to be part of these two very talented teams brought him much success over the years.

Tyler is looking forward to graduation in May then heading home to join his dad and grandpa in the family operation.

Garrett Hartwell of Aberdeen, SD will be judging our "Fairest of Them All" Show on Saturday. Garrett has judged for the North Star Classic in the past, evaluating the Junior Show.

In loving
memory of
**Paul
Schmitz**



Paul's family wanted to provide banners (in honor of their father) as banners hold memories, memories last a lifetime, and the stories from these memories will be passed on for generations to come.



"The fondest memories of my life were made possible by Mom & Dad because they spent the time helping our values grow strong. These memories and values come from loving cattle."



Hoffmann

ANGUS FARMS

Join us for our annual
BULL SALE event offering
35 yearling bulls from the
heart of our program!

2021 bulls will feature
the genetics of:

KR Outfit
Casino Bomber
Sitz Accomplishment
Frey's Cowboy Logic
and others.

BULL SALE

**THURSDAY,
FEBRUARY 11, 2021**

SALE BEGINS AT 2:00 P.M.

Hoffmann
ANGUS FARMS

14552 39TH ST SE | WHEATLAND, ND

Dallas Hoffmann: 701-238-7842
Danny Hoffmann: 701-541-3555

Logan Hoffmann: 701-388-2618
Email: dhoff@ictc.com

Pearls of the Prairie

ANGUS FEMALE SALE

Offering elite heifer calves, powerful
bred heifers and proven productive cows!!

NOVEMBER 14, 2021 • 1 PM
KIST LIVESTOCK • MANDAN, ND

HOFFMAN ANGUS FARMS
14522 39th St SE | Wheatland, ND
Dallas: 701-238-7842
Logan: 701-388-2618


NELSON ANGUS
8555 72nd Ave NE | Egeland, ND
Mike: 710-230-2132

ANDERSON ANGUS RANCH
4509 149TH AVE SE | CHAFFEE, ND
RYAN: 701-238-1064

K&F LAND AND LIVESTOCK
Towner, ND
Vern Frey: 701-721-0344

This sale will be broadcast live on the internet.

DVAuction
Broadcasting Real-Time Auctions
Real time bidding & proxy bidding available.

facebook.com/pearlsoftheprairie 

ndfb

Freedom. Opportunity. Self-reliance.

To learn more visit us at ndfb.org



Maasjo Farms

David Maasjo
4368 121st SE
Valley City, ND 58072

Columbia Grain



3344 Co. Hwy. 22
PO Box 696
Valley City, ND 58072
701-845-1921(P)
701-845-1827 (F)

WWW.COLUMBIAGRAIN.COM



CHOICE
HOTELS

(701) 845-5333
Fax: (701) 845-2335
Toll Free: 1-800-521-2121
455 Winter Show Road SW
Valley City, ND 58072-3936

Bar & Grill On Site
Wireless Internet Access



- 88 Rooms
- Conference Rooms
- 24 Hour Desk
- Honeymoon Suite
- Business Suite
- Grand Family Suites
- Bar & Grill
- Wireless High Speed
- Ample Parking



Located Inside
The Wagon Wheel Inn

845-2525
www.tavern94.com

*Drink Specials and Basket
Menu Served Until 1 am*

Schaefer Vermeer Equipment

*"Proud To Be A
North Star Classic Sponsor"*

ROWSE



Your One-Stop Source For
Haying Equipment and Repair Parts
For Rowse & Vermeer

11234 25th Street SE ~ Valley City, ND
bigyellowironag@yahoo.com ~ 701- 646-6089

701-490-0652
Cal Cell

701-490-6460
Kyle Cell

2020 NORTH STAR CLASSIC SALE

SATURDAY, DECEMBER 5, 2020 • 2:00 P.M.

Dear Cattle Enthusiasts,

We are extremely anxious to have you take time to view an exceptional sale offering! Participating breeders were asked to consign some of their strongest genetics and most outstanding individuals and that is what they have done! The sale cattle will make strong additions to any program that values the hardiness and productivity of these Dakota and Minnesota bred and raised cattle.

The bred heifers are close to production and will calve to some of the very top sires in their respected breeds. Heifer calves will be some of the best available this year. If you are in the market for a show heifer prospect, you can easily make that acquisition on December 5th. We are excited to offer a few steers again this year from a great breeder located in South Dakota. Any heifer or steer bought in the sale on Saturday is eligible to participate in Showmanship on Saturday and in the Junior Show on Sunday. Please contact these established, progressive and noteworthy breeders with any questions or if they can be of assistance in adding herd quality and profitability to your herd.

NDWS Livestock Committee

NORTH STAR CLASSIC SALE

CONSIGNOR	PHONE	LOTS
Heifers:		
Four Hills Farm Inc.	218-329-9293	Lot 1
JK Angus	701-680-3337	Lot 2
Logan Hoffmann	701-388-2618	Lot 3
Chris Hoffmann	701-388-3396	Lot 4
Hall Stock Farm	701-720-4966	Lot 5, 6, 7
Erdmann Angus Ranch	701-680-2937	Lot 8
Halverson Angus	701-388-4216	Lot 9
White Farms	218-639-6941	Lot 10
BJ Farms	218-367-2735	Lot 11
K & L Livestock	715-299-1094	Lot 12, 13, 17, 18
Steers:		
Beitelspacher Ranch	605-281-1055	Lot 14, 15
Pearl Valley Shorthorns	701-840-1143	Lot 16

ADDITIONAL ANIMALS MAY BE CONSIGNED BY SALE DATE.

SALE STAFF

DUSTIN CARTER
AUCTIONEER
712-898-9972

KRIS PETERSON
SPECIAL ASSIGNMENT
701-339-0305

STACY ERDMANN
SALE MANAGER
701-680-1224

KIRBY GOETTSCH
FARM & RANCH GUIDE
605-380-3939

TONY HEINS
CATTLE BUSINESS WEEKLY
701-400-4435

2020 NSC SALE - HEIFERS

1

FHF Beauty Sky

Bred Heifer

Consigned by: Four Hill Farms Inc.

Reg. #: 19524979

BIRTHDATE: 3/25/19

Connealy Earnan 076E
Musgrave Big Sky
SAV Primrose 7861
Sire: HAF Big Sky 6060
S A V Brilliance 8077
BH Ellnora 164
BH Ellnora 559
Sitz Dash 10277
Barstow Cash
Barstow Queen W16
Dam: Spring Valley K Beauty 171
Sitz Upward 307R
Spring Valley K Beauty 171
Spring Valley K Beauty 8141

CED	10
BW	+0.8
WW	78
YW	138
MILK	27

Great brood cow potential here. Elite EPDs could have her calves getting noticed for years to come. Her mother was bred at Spring Valley Angus and her sire was bred at Hoffman Angus. She is bred to calve March 25 to our heifer bull Mogck United Front 118. We have been using him in our AI program as well as natural service. We own this bull with Anderson Angus and have high expectations for his progeny. His first calf crop is good. Poured, dewormed, vaccinated, given 1st round scour vaccine. Ultrasound examined safe to Mogck United Front 118. Estimated due date: 3/24/2021

2

JK Black Betty

Heifer

Consigned by: JK Angus

Reg. #: Pending

BIRTHDATE: 2/27/20

O C C Legend 616L
B C Lookout 7024
Gibbet Hill Mignonne E37
Sire: PVF Surveillance 4129
PVF ALL PAYDAY 729
PVF Ellen 9100
Hyline Ellen 410
Animal: JK Black Betty
G 13 Structure
LaGrand PV Black Velvet 5103
Roth Formera 9199
Dam: Elba L169
S A V 8180 Traveler 004
Plainview Elba G50
Plainview Elba 51U

This Surveillance daughter is about as complete as you can make them. You will love this heifer from every angle. She has lots of power with loads of style. Her dam has produced the ND State Fair State Champion.



3

HFMN Blackbird 0191

Heifer

Consigned by: Logan Hoffmann

Reg. #: Pending

BIRTHDATE: 1/21/20

CCR Cowboy Cut 5048z
CCR Anchor 9071B
CCR MS Barb 2120z
Sire: W/C Nighwatch 84E
WAGR Dream Catcher 03R
Miss Werning KP 8543U
Miss Werning 534R
Animal: HFMN Blackbird 0191
Musgrave Invision
Panther Cr Incredible 6704
Panther Cr JH Blackbird 409
Dam: RHL Blackbird 803
Sitz Upward 307R
Nelsons Opal A310
Nelsons Opal S603

This Night Watch heifer would make a fun project for a showman of any age. She is halter broke and ready to show.



2020 NSC SALE - HEIFERS

4

HFMN Miss Wonderful 9195 Bred Heifer

Consigned by: Chris Hoffmann

Reg. #: Pending

BIRTHDATE: 2/6/20

CCR Cowboy Cut 5048z
CCR Anchor 9071B
CCR MS Barb 2120z
Sire: W/C Nighwatch 84E
WAGR Dream Catcher 03R
Miss Werning KP 8543U
Miss Werning 534R
Animal: HFMN Miss Wonderful 9195
S A V Brilliance 8077
PVF Insight 0129
P V F Missie 790
Dam: Gateway Miss Wonderful E399
Sitz Dash 10277
E&b Lady Dash 399
E&b Lady Bismarck 178

A powerfully constructed Sim-Angus Bred Heifer that will make a great cow and bring home a stylish big calf in the fall. A.I. bred on 5/6/2020 to KR Outfit. Pasture exposed from 5/12/2020 to 6/26/2020 to RBM Top Cut G192. Ultrasound examined safe and estimated due date 3/5/2021 to RBM Top Cut G192.



5

Hall Princess Sue 944 Bred Heifer

Consigned by: Hall Stock Farm

Angus

Reg. #: 19415358

BIRTHDATE: 2/26/19

D R Sierra Cut 7404
Tehama Revere
Tehama Elite Blackbird T003
Sire: S Thrive JAS 5515
S Summit 956
S Selena 201
S Selena 0418
S Summit 956
S Summit 151
S Camilla 495
Dam: Hall Princess Sue 510
MCATL Reachout 836
NLH Princess Sue 022
N L H Princess Sue 201

CED	8
BW	+.5
WW	48
YW	88
MILK	18



This big middled, moderate-framed Thrive daughter is one you can appreciate for her style and balance and maternally-oriented pedigree. She is bred to our herd sire, DL Dually 828, who has been consistently adding punch and power to his calves.

The "Dually" sired calves were very popular amongst visitors on our tour stops this fall. Bred on 4/28/2020 to DL Dually 828 and pasture exposed from 5/27/2020 to 7/14/2020 to DL Dually 828.

Ultrasound examined safe and estimated due 2/5/2021.

6

HABR Gracyn G959 Bred Heifer

Consigned by: Hall Stock Farm

SimAngus

Reg. #: 3556117

BIRTHDATE: 3/21/19

S D S GRADUATE 006X
CCR WIDE RANGE 9005A
CCR MS APPLE 9332W
Sire: BCLR REVELATION D21-3
HSF HIGH ROLLER 12T
WS MOTHER LODE W21
WS MISS BEEFWAY T7
Animal: HABR GRACYN G959
TEHAMA REVERE
S THRIVE JAS 5515
S SELENA 201
Dam: HALL VIENNA 764
S SUMMIT 151
NLH VIENNA 307
NLH VIENNA 101

CED	14.7
BW	+.1
WW	75.6
YW	121.1
MILK	17.1

Females like this are hard to part with. "G959" stems from a powerful cow family who has routinely produced high performing and high selling bulls. Combining the power of her maternal granddam with the well-known donor, "W21," spells major brood cow potential. Furthermore, she is one of the first females offered at public action safe to CLRS Guardian 317G who topped the 2020 "Bred for Balance" sale in MN at \$85,000! Homo Polled. A.I. bred on 5/28 to CLRS Guardian 317G pasture exposed from 6/2/2020 to 7/15/2020 to ES Hallmark

GX46. Ultrasound examined safe and estimated due 3/9/2021 to CLRS GUARDIAN 317G.



Any heifers bought in the sales on Saturday are eligible to participate in Showmanship on Saturday and the Junior Show on Sunday!

2020 NSC SALE - HEIFERS



HABR Holly H051

Consigned by: Hall Stock Farm

Heifer
SimAngus
Reg. #: 3705275

BIRTHDATE: 2/23/20

Sire: BCLR REVELATION D21-3
S D S GRADUATE 006X
CCR WIDE RANGE 9005A
CCR MS APPLE 9332W
HSF HIGH ROLLER 12T
WS MOTHER LODE W21
WS MISS BEEFWAY T7
Animal: H051
MR NLC UPGRADE U8676
TJ MAIN EVENT 503B
TJ MISS NEW DAY U14
Dam: HABR FELICITY F814
CCR VAQUERO 7081B
HABR DIANNA D652
HABR ZIVA Z223

CED	11.7
BW	+9
WW	71.3
YW	113.6
MILK	20.9

Ever since she was a baby this sweet-tempered daughter of our resident herd sire, BCLR Revelation D21-3 has always been looking for attention. Her young maternal granddam is looking to be a big time producer for us as she boasts ratios of 3 @ 108 for WW and 2 @ 106 for YW. "Holly" would be a great heifer for a beginning showman backed by a solid cow family we believe in! Homo Polled.



EAR Miss Southern Charm E008

Consigned by: Erdmann Angus Ranch

Heifer
Angus
Reg. #: 19838677

BIRTHDATE: 2/6/20

Sire: BUBS Southern Charm AA31
BT Crossover 758N
Silveiras Conversion 8064
EXG Saras Dream S609 R3
Connealy Stimulus 8419
Hickory Hill Erica 009
Hickory Hill Erica TA32
Connealy Impression
HT Impressive 1269
Beauty of HT 17
Dam: Ear Pride E314
BT Direction 65D
BT Pride 144L
Pauls Hyline Pride 603

CED	3
BW	+3.4
WW	54
YW	95
MILK	27

This heifer is complete. She's a well balanced heifer, that carries adequate bone and muscle throughout. She's got bone, a clean look and that maternal eye-appeal. From the start this heifer was sweetheart to halter break. The girls have her soft to lead and ready to go!



Halverson Prideva 206

Consigned by: Halvorson Angus

Bred Heifer
Angus
Reg. #: 19579286

BIRTHDATE: 2/23/19

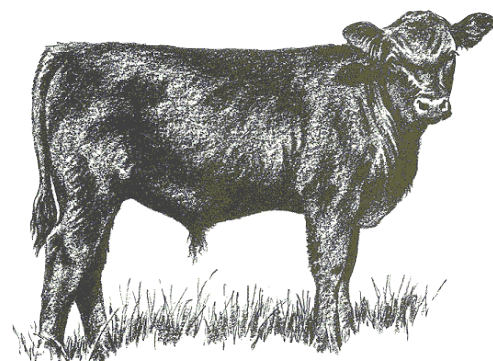
Sire: Connealy Blackhawk 6198
Connealy Arsenal 2174
Connealy Armory
Ebba of Conanga 808
Connealy Consensus 7229
Precious of Conanga 380X
JMc Precious Layla 8390 3303
Alberda Bushwacker 545
LEMAR Bushwacker 125W
Lemar Miss Wix 411T
Dam: E M H Jet Lass 103
G C R Freedom Lad 469T
BSH Jet Lass 66
B S H Jet Lass 26

CED	7
BW	+7
WW	65
YW	113
MILK	29

Pasture exposed to Mr. Rainmaster BH 300 from June 23rd to July 31st and vet checked to calve early April. Service bull registration #19306317.

Visit our webiste at:

<https://halversonangus.wixsite.com/baker-mn-cattle>



2020 NSC SALE - HEIFERS

10 **WF Pink Lady 4H** Heifer
 Consigned by: White Farms Charolais
 Reg. #: F1290265

BIRTHDATE: 2/18/20

THOMAS OAHE WIND 0772ET P
 TR MR FIRE WATER 5792RET
 THOMASWISSERSWEET1764ET
 Sire: PZC BOTTOMS UP 5011 ET
 JWK IMPRESSIVE D040 ET
 THOMAS MS IMPRESSIVE 0641
 BCI MISS VERYLIMIT 6033P
 BRINGITON
 CF BRING ON
 CF MISS CENTERFOLD 41N
 Dam: SCC BETSY 505
 FINK 8823 OF 0644 FM
 RC JUST ALTA 8823 Y182
 RC JUST ALTA 2250 U160



11 **BJK Kate 0054H** Heifer
 Consigned by: BJ Farms Simmental
 Reg. #: 3796343

BIRTHDATE: 2/28/20

TJSC OPTIMUS PRIME 12W
 CSCX BANDWAGON 513A
 KLS DIAMOND W516
 Sire: FLL ON THE BANDWAGON
 STF AFFIRMED P44R
 FLE MISS FAITH
 MBG MISS BLK STAR

Animal: KATE
 Dam: 5028

Deep sided, 1/2 blood
 simmi heifer. Good hair,
 good foot & ready for
 the show ring.



12 **Larson Tag 1** Heifer
 Consigned by: K & L Livestock Simmental
 Reg. #: Pending

BIRTHDATE: 3/13/20

Revival X Banshee

13 **Larson Tag 2** Heifer
 Consigned by: K & L Livestock Commercial

BIRTHDATE: 3/14/20

OITC x Meyer 734/Irish Whisky

2020 NSC SALE - STEERS

14 Consigned by: Beitelspacher Ranch Steer
 Reg. #: NA

BIRTHDATE: 3/28/20

SIRE: Here I Am
 DAM: Northern Improvement (Angus)

DESCRIPTION: This steer has lots of eye appeal and will
 compete at all levels.

15 Consigned by: Beitelspacher Ranch Steer
 Reg. #: NA

BIRTHDATE: 3/22/20

SIRE: Style
 DAM: Monopoly

DESCRIPTION: A super good Style calf out of our Monopoly
 donor cow that came from Reiman Ranches in S.D. His
 mother was champion market heifer and third over all at the
 2014 South Dakota State Fair.

16 Consigned by: Pearl Valley Shorthorns Steer
 Reg. #: 4310505

BIRTHDATE: 3/17/20

SIRE: Leveledale Boardwalk 530C
 DAM: JSF Cumberland 165D

DESCRIPTION: Breed
 steers are hard to
 come by. Good ones
 are even harder. This
 steer has it all. The
 front 1/3 is long, clean
 and angular. He is big
 hipped and has an im-
 pressive rear. He will
 be fun to drag around
 this summer.



Dam of Lot 16

17 **Larson Tag 8** Steer
 Consigned by: K & L Livestock
 Reg. #: Pending

BIRTHDATE: 3/18/20

Wide Open x Crimson Tide

18 **Larson Tag 13** Steer
 Consigned by: K & L Livestock

BIRTHDATE: 3/28/20

Unforgiven x Angus



Country Christmas

Friday, December 4, 2020
5 P.M. to close

(Admission with a Cattlemen's Ball & Sale Dinner Ticket)

Saturday, December 5
10 A.M. to 3 P.M.

Winter Show
South Exhibit Bldg.
Valley City • ND

(Saturday admission is 1 can of non-perishable food for the Barnes County Food Pantry)

Holiday Shopping
NDWS Gift Basket
Drawing
DIY Craft





CATTLEMEN'S BALL & SALE

Friday, December 4, 2020

NDWS Event Center South Exhibit Building

700 7th St. SE, Valley City, ND

Doors open at 5 p.m. • Dinner at 6 p.m.



Tickets are \$100/each. Includes supper and a chance at one of \$6250 in cash prizes & multiple raffle items.

Purchase tickets by contacting:

North Dakota Winter Show Office:	701-845-1401
Dallas Hoffmann, Sale Committee:	701-238-7842
Dan Donnelly, Sale Committee:	651-353-7282
Logan Hoffmann, Sale Committee:	701-388-2618
Steve Wolff, Sale Committee:	701-710-1574

R U F I A W I
"BRANDING PARTY"
LET'S BRAND THE NDWS!

CATTLEMEN'S SALE ITEMS:

- | | |
|-----------------------------------|--|
| LOT 1 MARIN & GARNER EEG | PACKAGE OF 3 EMBRYOS |
| LOT 2 FIVE STAR RANCH | OPEN HEIFER |
| LOT 3 L83 RANCH/LODOEN CATTLE CO. | OPEN HEIFER |
| LOT 4 NORD ANGUS | EMBRYO PACKAGE |
| LOT 5 JK ANGUS | IVF FLUSH OUT OF JK MARGO |
| LOT 6 BRENT WIRTH | CHOICE OF 3 OR 5 EGGS BY UPS SENSATION |
| LOT 7 RED WILLOW LODGE | GUIDED SPEAR FISHING TRIP |
| LOT 8 BANK FORWARD | NDSU BISON TICKETS |
| LOT 9 ND WINTER SHOW | CONCERT, RODEO TICKETS & HOTEL ROOM |
| LOT 10 ND WINTER SHOW | MEDORA MUSICAL PACKAGE |
| LOT 11 HAY'S LODGE | PHEASANT HUNTING PACKAGE |
| LOT 12 ND WINTER SHOW | 2021 WRANGLER NFR TICKETS |

SALE STAFF

DUSTIN CARTER
 AUCTIONEER
 712-898-9972

KEVIN MURNIN
 AMERICAN HEREFORD ASSOC.R
 406-853-4638

DAN DONNELLY
 SALE COMMITTEE
 651-353-7282

KIRBY GOETTSCH
 FARM & RANCH GUIDE
 605-380-3939

TONY HEINS
 CATTLE BUSINESS WEEKLY
 701-400-4435

LOGAN HOFFMANN
 SALE COMMITTEE
 701-388-2618

KRIS PETERSON
 SPECIAL ASSIGNMENT
 701-339-0305

DALLAS HOFFMANN
 SALE COMMITTEE
 701-238-7842

STEVE WOLFF
 SALE COMMITTEE
 701-710-1574

A big thank you goes out to the Livestock & Sale Committee for making this event along with the North Star Classic a success – year in and year out!

Thank you for stepping up to the plate and volunteering to serve on these committees.

The time dedicated to secure consignors, find judges, set up the facility, and guide the staff does not go unnoticed.

The entire board of directors and NDWS staff thanks you for your commitment!



With Gratitude



PACKAGE OF 3 EMBRYOS

MARIN & GARNER EEG

MARIN EEG 218-689-1681/GARNER EEG 218-689-0777

SLGN STONY'S BECCA

"The winningest female of 2015"

Reserve at Junior Nationals and Denver and champion of many other shows that she attended. These are sexed female embryos full siblings to the only heifer we've ever had of hers (which just so happened to win the bred and owned at junior nationals). These will be an awesome buy for anyone looking to have a good Red Angus female.

HMYH SURRENDER 05C

Our purebred Simmental donor has raised many great calves in the last couple years. She was also Fairest of Them All, here in 2016. We are very excited for her future and what we know she can do for our family. We also know that whoever buys this package will be introducing great genetics to their herd. Fort Knox is sexed female while the Profit is not sexed.



SLGN Stony's Becca 4214



Broker x Surrender that sold for \$25,000



SLGN Bojangles



Left:
Full Sibling to Embryos:
Grand Champion Bred and
Owned Female 2017



HMYH Surrender 05C



Bankroll x Surrender



Below:
Profit x Surrender:
Shown by Tanner Curtin
Champion Purebred
Simmental Iowa Beef Expo

Three sexed heifer IVF embryos, guarantee of one pregnancy if implanted by a professional technician.



OPEN HEIFER

FIVE STAR RANCH, ST. CHARLES, MN
JARED, HANNAH, JUNE & WILLA SEINOLA
507-271-2634



The Remington Lock n Load 84U x GLS/KB Finesse Y187 has produced the quality that Five Star Hatti H17 exemplifies. These are cattle that couple physical quality with a genotype that reads with long standing Simmental and Angus greats. From high sellers, to cattle that are highly productive and build an operation's bottom line. H17 embodies a striking silhouette while encompassing natural body and muscle shape. We believe this female is right in terms of her maturity pattern and the future will hold her best



Five Star Hallie H2 - Full Sister



Full Sister Five Star Faith F2

days. She has a dam that that has done it on the tan bark and in production. A sire that is found in some of the most popularly used genetics in the Simmental world. Combine the physical attributes of Five Star Hatti H17 with her genetic make up and you have a female that is at the forefront of what have made Simmental influenced cattle a craze across this great country.

Hatti is a member of our pen of 3 heifers here in Valley City. We would love to visit about the cattle anytime if you're able to stop by or please call or text.

Thank you for your interest.

REG. # 3751668

REMINGTON ON TARGET 2S
REMINGTON LOCK N LOAD54U
BAR15 MISS KNIGHT78E-51G

FIVE STAR HATTI H17
B C LOOKOUT 7024
GLS/KB FINESSE Y187
T60



OPEN HEIFER

L83 HADDIE 049H

L83 RANCH / LODOEN CATTLE COMPANY

BEN LODOEN • 701-201-0477

Gentle, big bellied, low maintenance, great haired and proven genetics on the top and bottom of her pedigree. Having the Lassie genetics in your herd is just a no brainer. Her grandma is 12 years old and still doesn't miss a beat. A junior exhibitor can have some fun with Haddie and then be able to grow their herd with confidence, she is built for the long haul. We will have an updated picture and a video posted to our ranch Facebook page. We will also have her entered into the show at the North Star Classic.



Red Zone



*Maternal Granddam
Lassie 566U*

Owner: 110221 LODOEN, RYLEE Birth Date: 04-03-2020
Breeder: 110221 - LODOEN, RYLEE Original Registration: 10-15-2020

BOLT EPDs - 10-18-2020 00:50

	HB	GM	CED	BW	WW	YW	ADG	DMI	Milk	ME	HPG	CEM	STAY	Marb	YG	CW	REA	FAT
EPD	164	46	12	-2.2	54	83	0.18	1.01	22	-5	12	7	16	0.19	0.09	12	-0.12	0.01
ACC			16	20	19	18	18	8	11	18	10	11	9	14	13	17	16	13
PCTL	52%	83%	62%	41%	71%	75%	76%	20%	70%	18%	22%	58%	45%	94%	41%	83%	83%	28%



EMBRYO PACKAGE

NORD ANGUS

LUKE NORD • 701-446-6157

We have been very fortunate to have a proven track record with our 1125 donor in that she can produce national caliber females and herd bulls alike. Full siblings and half siblings to these matings have been highly sought after by the public. We rarely sell embryos so we want to assure you that investing in this cow family is one that has been consistent and true in terms of real world cattle. Performance, udder quality, muscle and an undeniable look is what we admire about this Donor. Listed are some of the daughters' success – Reserve Champion female at the 2020 NWSS junior and open shows, Supreme female at the 2019 American Royal, Reserve Grand female at the 2019 NJAS, Reserve Supreme female at the 2020 AKSARBEN. A package of 3 Conley Express sired embryos we sold on this sale last year went 2/3 on confirmed pregnancies. These embryos offered are IVF non sexed embryos.

Donor 1125



We are offering choice between a package of 3 embryos by 5T Powerchip x PVF Lucy 1125 and a package of 3 embryos by Conley Express x PVF Lucy 1125.



Maternal sister



Maternal sister



Maternal sib to the matings



FIRST TIME OFFERED
IVF FLUSH OUT OF JK MARGO
JK ANGUS • LISBON, ND

WYLIE, SHERRY, KAITLIN AND JAMIE GEYER
701-680-3337 OR 701-680-1666

Margo was the 2017 Junior Calf Division Champion in Louisville and went back in 2018 and was the Senior Heifer Division Champion the following year. She was also crowned the North Star Classic Supreme Heifer that year. This young female has made an immediate impact on our herd with her first natural calf and now we have the first ET calves on the ground and they have already found success in the show ring and topped our private treaty sale this fall. This is your chance to let her make her mark on your herd.

Buyer is guaranteed a minimum of 6 embryo's, with a maximum of 10. Anything after 10 embryos will be split 50/50 with the seller. Flush to be done at buyer's expense and seller's convenience.
Registration #3735793

(Pictures are North Star and each division picture and her first ET calf.)





CHOICE OF 3 OR 5 EGGS BY UPS SENSATION BRENT WIRTH

715-760-1727

Sell choice of 3 or 5 eggs by UPS Sensation 2296 out of each donor 73T eggs are IVF, 215z eggs are IVF sorted female. Selling choice out of our Dams of Distinctions. The number of banners and accolades of these two females and in their pedigrees are too numerous to mention. The impact they have had on our program is huge and we want to share this opportunity with you. Guarantee of 60 day pregnancy. (1 on 3 eggs or 2 on 5 eggs)



LW 11R Belinda 73T • Reg. #42785166



BW 973H Sugar & Spice 215Z ET • Reg. #43290111



Maternal sib to 73T embryos



Full sib to 215Z embryos



Maternal sib to 73T embryos



Maternal sib to 215Z embryos



GUIDED SPEARFISHING TRIP

RED WILLOW LODGE

GEORGE BERGER • 701-490-1222

Baldhill Creek Adventures of Binford/Luverne, ND offers some of the best spearfishing in the state of North Dakota! Baldhill Creek adventures, guided by George Berger, is offering a 3-day weekend of spearing/fishing (arrive Friday evening, fish/spear Saturday and Sunday, depart Sunday afternoon). Within a short distance of the lodge there are multiple lakes loaded with a wide variety of game fish.

This package includes: transportation, spearing equipment, lodging and food for up to four people.

Applicable licenses will be the responsibility of the buyer.

Package must be used within one year of purchase.





NDSU BISON TICKETS

BANK FORWARD

DAN DONNELLY • 651-353-7282

The NDSU Bison are the defending National Champions and have won 8 of the last 9 FCS titles.

This package will include 4 front row tickets to the September 11, 2021 game against Valparaiso at the FargoDome.

You will not want to miss this match-up!



CONCERT, RODEO TICKETS & HOTEL ROOM

NORTH DAKOTA WINTER SHOW

PETE PAULSON • 701-490-0524



The North Dakota Winter Show is home to the oldest and longest running agriculture show in North Dakota. The 84th Annual NDWS is set for Feb. 28 to March 6. Kickoff concert held Feb. 27.

Three PRCA rodeo performances, livestock shows, pony and horse pull, tractor and truck pull, auctioneers contest, commercial exhibits and much more!

This package includes: 4 Concert Tickets on Feb. 27th, 4 PRCA Rodeo Tickets Saturday March 6th choice of afternoon or evening performance along with a hotel room to be reimbursed to the package buyer. Rodeo contractor Bailey Pro Rodeo is sure to bring a jam-packed entertaining rodeo!

Concert entertainment will be announced soon. One-night lodging at a hotel in Valley City will be reimbursed once the package buyer provides receipt to the Winter Show office.





MEDORA MUSICAL PACKAGE

NORTH DAKOTA WINTER SHOW

701-845-1401

Good any day of the week!

PACKAGE INCLUDES:

- 1 Night's lodging at Elkhorn Quarters
- 2 Medora Musical tickets
- 2 Pitchfork Fondue tickets
- \$50 Medora Shopping and Dining Gift Card
- JQ Clothing Co. Gift Card (in Medora)



PHEASANT HUNTING PACKAGE

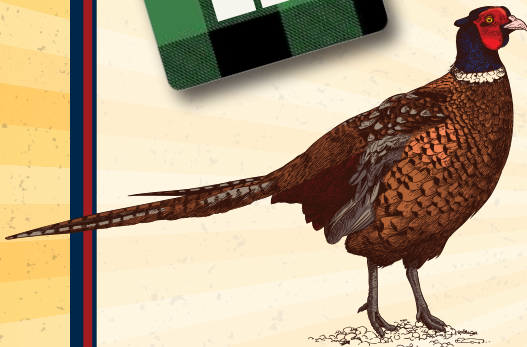
HAY'S LODGE • FULLERTON ND

701-709-0285

2 nights/3 days pheasant hunt.

Good for up to 4 people.

Includes meals, beverages, lodging & 3,500 acres of private land.



Applicable licenses will be the responsibility of the buyer.



2021 WRANGLER NFR TICKETS

NORTH DAKOTA WINTER SHOW

701-845-1401

Wrangler National Finals Rodeo 2021
in Las Vegas, Nevada

4 Tickets. Choice of the 1st weekend:
Thursday, Friday, Saturday or Sunday

Our season tickets are usually 2nd level 3rd row seats.

Redeemable with the NDWS as soon as they become available in October 2021.





2020 North Star Classic MEMORIES





*Some of the best things in life
are the people you've met,
the places you've seen and the
memories you've made
along the way.*





2020
LIVESTOCK HONOREE
**BILLY
HOFFMANN**

Billy Hoffmann was raised on a diverse family operation near Wheatland, ND. Billy and his brothers were active not only on the operation while growing up, but also exhibited at the North Dakota Winter Show and participated in 4-H. While attending NDSU to pursue a degree in Animal Science, he was part of the Livestock Judging team and was honored as the Little "I" Champion Showman. After graduating in 1975, he returned home to the operation with his brothers and his father. Hoffmann Angus was started by purchasing bred heifers from an operation in the Ada, MN area. Hoffmann Angus has grown over the years to hosting multiple production sales a year. Billy is proud to say that the 5th generation is an integral part of the operation!

Staying involved and participating in youth programs and local organizations is extremely important to Billy. He has served on the local Church board, was a county 4-H leader for 25 years, and is still active in the Red River Valley Fair as a board member. He was honored as the Red River Valley Fair Person of the Year. Billy has served time on the North Dakota Angus Association Board of Directors and as a Junior Advisor for the North Dakota Junior Angus Association. He has also received the Man of the Year award from the North Dakota Angus Association.

Billy and the Hoffmann family have exhibited at the North Star Classic since the beginning in 1999, along with offering multiple animals in the consignment sales over the years. Billy and his wife, Marcene, have passed the love of agriculture and the need to serve onto their three sons Dallas, Lance and Logan. Each one of the sons has a dynamic part of the operation.

Join us as we recognize Billy in the Main Arena on December 4 at 3:00 pm and during the Cattlemen's Ball & Sale on Friday evening.



2019 OVERALL CHAMPIONS



*Delaney Herefords-Lake Benton, MN
Supreme Individual Bull*



*Lynsey Schmitz-Oakes, ND
Ag Country Showdown Supreme Female*



*Dakota Aaseth-Velva, ND
Grand Champion Heifer in Jr. Show*



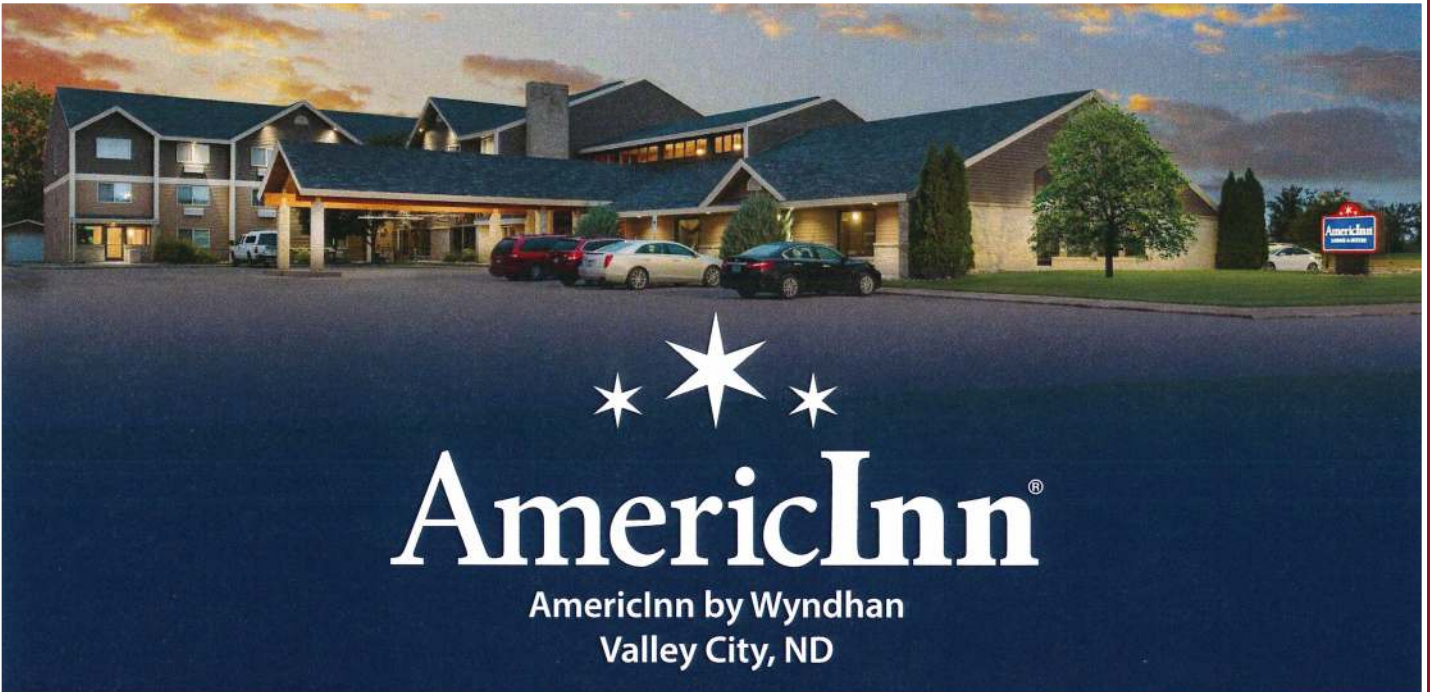
*Lynsey Schmitz-Oakes, ND (pictured is Lacey)
Ag Country Showdown Grand Champion Market Animal*



*Delaney Herefords-Lake Benton, MN
Supreme Pen of Females*



*Petersen Farms-Bowbells, ND
Supreme Pen of Bulls*



AmericInn[®]
AmericInn by Wyndham
Valley City, ND

AmericInn is the official hotel for the North Star Classic

- ★ Bridges Bar & Grill attached
- ★ Indoor pool, hot tub, sauna
- ★ Game room with pool table
- ★ Expanded hot continental breakfast
- ★ Family Suites and Business Suites
- ★ Exercise room
- ★ Meeting rooms



***Visit americinn.com or call us
direct for the best rate.***

701-845-5551

280 Wintershow Rd SW | Valley City, ND 58501

WESTERN AG REPORTER

All the news a busy rancher has time to read.

When it comes to receiving industry news you need while it's still news, the Western Ag Reporter delivers. Not only are we a printed voice for agriculture but, we offer on-the-ground livestock field services second to none.



Will Bollum
Field Editor

North Dakota, South Dakota
& Minnesota

Cell: (507) 244-0833

will@westernagreporter.com

Find Western Ag Reporter & Will on Social Media



Western Ag Reporter
Will Bollum - Western Ag Reporter



@westernagreporter
@westernagwill



@WesternAgReport
@WesternAgWill

westernagreporter.com

2020 HEREFORD SALE

SATURDAY, DECEMBER 5, 2020 • 2:30 P.M.

CONSIGNOR	PHONE	LOTS
Donnelly Farms, Valley City, ND	651-353-7282	Lots 2, 7
Friesz Livestock, New Salem, ND	701-400-8744/701-400-3569	Lots 4, 6
Olson Hereford Ranch, Argusville, ND	701-361-0684	Lots 5, 9
Stroh Hereford Ranch, Killdeer, ND	701-690-4860	Lot 1
Walter Jones, Gatzke, MN	218-689-3373	Lot 3
Wollman Ranch, Bismarck, ND	701-400-6043	Lot 8

Additional animals may be consigned by sale date.



SALES STAFF

Andy Mrnak • Auctioneer
701-206-1095

Kevin Murnin • Hereford World
406-853-4638

Tony Heins
Cattle Business Weekly
701-400-4435

Joana Friesz • Sales Manager
701-400-8744

SPECIAL THANKS TO

Stroh Hereford Ranch, Killdeer, ND
for donating this year's donation heifer.

All proceeds go to the NDHA for Hereford promotion.

Tickets are auctioned off – 10 at a time – at the beginning of the sale. Ten semi-finalist tickets drawn.

Winner will be drawn from these 10 semi-finalists.

PAST DONORS:

- 2019 - Mrnak Hereford Ranch, Bowman, ND
- 2018 - Behm Polled Hereford, Beulah, ND
- 2017 - C Olson Hereford Ranch, Argusville, ND
- 2016 - Topp Herefords, Grace City, ND
- 2015 - Stuber Ranch, Bowman, ND
- 2014 - Pelton Polled Herefords, Halliday, ND
- 2013 - Baumgarten Cattle Co., Belfield, ND
- 2012 - Friesz Livestock, New Salem, ND
- 2011 - Perman Hereford, Streeter, ND
- 2010 - Midway Polled Herefords, Sheyenne, ND
- 2009 - Rockeman Herefords, Donnybrook, ND
- 2008 - Bruce Anderson, Valley City, ND
- 2007 - Helbling Herefords, Mandan, ND
- 2006 - Seefeld's Bar S Ranch, Harvey, ND
- 2005 - Friedt Herefords, Mott, ND
- 2004 - Carter's Polled Herefords, Rock Lake, ND
- 2003 - Topp Herefords, Grace City, ND

HEREFORD SCHEDULE OF EVENTS



NDHA ANNUAL MEETING

Saturday, December 5 @ 5:00 pm
ND Winter Show South Building

SILENT AUCTION

Saturday, December 5 @3:00 pm
(Held During the Sale)
Proceeds Used for ND Jr. Hereford Field Day

NORTH DAKOTA HEREFORD BANQUET

Saturday, December 5
ND Winter Show Building
6:00 pm Social & 6:30 pm Banquet
Includes: Junior Association Silent Auction,
Prime Directory Pages,
Crowning New Hereford Royalty,
Hereford Breeder of the Year



NDHA HEIFER FUTURITY



Heifer sold in 2019 sale was Reserve Champion Hereford Heifer in the 2020 Black Hills Stock Show Junior show.



2019 heifer donated by Mrnak Hereford Ranch and won by Logan Hoffmann, Wheatland, ND.

Heifer calves purchased in the NSC Hereford Sale are eligible to compete in a futurity comeback show at the Junior Hereford Field Day to be held during the ND State Fair, Minot, ND or the Great Plains Junior Hereford Show held during the Red River Valley Fair in West Fargo, ND.

Each consignor will contribute \$20 per heifer consigned in this sale along with each junior who intends to compete in either of these two shows. The money will be split and paid out according to how many show in either of these two shows. Also, the association has agreed to pay all juniors \$20 per head at these two shows when leaving the ring.

The NDHA sponsors Hereford steer premiums each year at the ND Junior Hereford field day held during the ND State Fair in Minot, ND and at the Great Plains Regional Junior Hereford Show held in July during the Red River Valley Fair, West Fargo, ND.

The NDHA will pay \$200 for champion and \$100 for reserve champion steers for the NDJHA filed day event. They must be from a registered sire and dam with the AHA.

The Great Plains Junior Hereford Show pays as follows:

- Grand Champion Market Steer Award & \$157.50
- Reserve Grand Champion Market Steer Award & \$78.75
- Breeder of Champion Steer Award & \$78.75
- Breeder of Reserve Champion Steer Award & \$15.75

There is also a junior show featuring a Hereford steer show during the Midwest Classic Jr. Hereford Show in Pipestone, MN in June 2021.

**2021 JUNIOR
NAT'L HEREFORD EXPO
TO BE HELD
JULY 11-18, 2021
AT
MADISON, WI**

HEREFORD JUNIOR GRANT PROGRAM

The North Dakota Hereford Association has set up a grant program for juniors who apply and are selected for the grants. The grant money of \$250 is to be used toward the purchase of a Hereford animal from the 2020 NSC Hereford Sale. The grant is not transferable and does not carry over to the next year. There will be three \$250 grants awarded.

ELIGIBILITY REQUIREMENTS:

1. Current Member of the ND Junior Hereford Association. (*Annual membership fee of \$10 may be sent with the grant application.*)
2. As of January 1, 2020 applicant must be at least 8 years old and not older than 21.
3. Must be able to provide at least equal to or greater than the amount of the grant purchase the Hereford animal.
4. Must purchase a Hereford from the NSC Hereford Sale to be held December 5, 2020 at the ND Winter Show Building in Valley City, ND.
5. Recipient of the grant must be present at the sale in order to use the grant.
6. Recipient agrees to abide by the rules of the Futurity Show and the 4-H code of ethics.

For grant applications please contact:
Joana Friesz • 701-400-8744
joana@northlandinsuranceagency.com

Submission Deadline: December 1, 2020
Mail Applications: Joana Friesz
P.O. Box 67
New Salem, ND 58563



2020 HEREFORD SALE

1

Donation Heifer

SHR Prairie Rose 067

Heifer

Consigned by: Stroh Hereford Ranch

Reg. #: 44184292

BIRTHDATE: 4/15/20

CL 1 DOMINO 860U
 CL 1 DOMINO 0130X 1ET
 CL 1 DOMINETTE 440P 1ET
Sire: SR SCOPE 117E
 BRC FACTOR Y19
 SR BENITA 464B
 SR DOODLES 842
Animal: SHR PRAIRIE ROSE 067
 CHURCHILL RANCHER 592R
 CHURCHILL RANCHER 8108U ET
 CL 1 DOMINETTE 301N
Dam: LADY RANCHER 4019 {DOD}
 KB L1 DOMINO 567R
 MISS DOMINO 961
 LADY DOMINO 380

CE	-0.1
BW	+4.2
WW	55
YW	91
MM	31
M&G	59

This heifer is a very capacious, thick made female that stems from a long line of productive momma cows here at SHR. Her dam 4019 is an AHA Dam of Distinction that is a very powerful Rancher daughter that has raised three phenomenal females that have been retained into our program.

2

DF Hazel 1H

Heifer

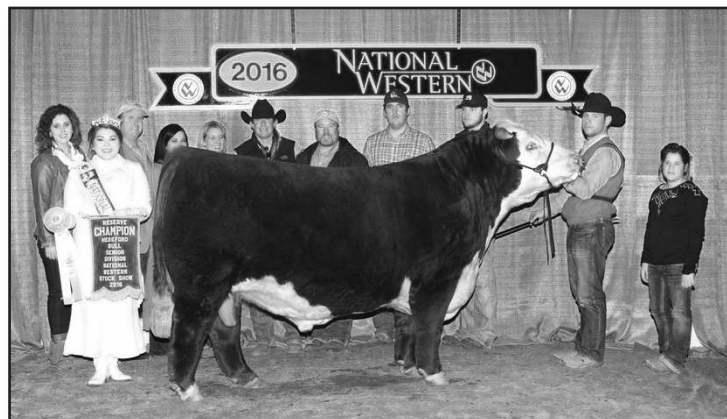
Consigned by: Donnelly Farms

Reg. #: Pending

BIRTHDATE: 1/20/20

LAGRAND RELOAD 80P ET
 STAR TCF LOCK-N-LOAD 300W ET
 STAR TCF ADV ORALEE 173P ET
Sire: TFR KU ROLL THE DICE 1326
 THM DURANGO 4037
 LH LANGFORD LADY 0253 ET
 LPG 59K INDEPENDENCE LASS 22N
Animal: DF Hazel 1H
 STAR BRIGHT FUTURE 533P ET
 STAR TCF SHOCK & AWE 158W ET
 MSU APOLLONIA 10M
Dam: BHF 21Z MISS JASMINE 614D
 TH 71U 719T MR HEREFORD 11X
 BHF 743 MISS JASMINE 21Z
 BHF 743 MISS JASMINE 109Z

CE	-4.0
BW	+5.2
WW	62
YW	100
MM	26
M&G	58



Roll the Dice - Sire of 1H

This rugged made Roll the Dice heifer is one that will catch your eye for her sheer cow power. Deep bodied and square made, along with massive boned. One that will find her way into the show ring but also be a major asset to your cow herd down the road. Dehorned.

3

WJH Payton 2003

Heifer

Consigned by: Walter Jones

Reg. #: P44074255

BIRTHDATE: 1/31/20

HARVIE RAFTSMAN 16R
 HAROLDSONS TRUMP 16R ET 32X
 HAROLDSON'S 37H MIRA ET 62K
Sire: TH 400U 32X TRUMP 206Z
 NJW FHF 9710 TANK 45P
 TH 605F 45P PRIMROSE 400U ET
 YY 125Y PRIMROSE 605F
Animal: WJH PAYTON 2003
 CHURCHILL SENSATION 028X
 CHURCHILL RED BULL 200Z
 CHURCHILL LADY 002X ET
Dam: RH 200Z 14B PAYTON 1617D
 HAROLDSON'S TANK 45P 10W
 ROSELAWN PAYTON 10W 14B
 ROSELAWN JEN 1T 47W

No EPD's
 Available



Long-bodied, deep-ribbed heifer with lots of cow power. Out of a Churchill Red Bull daughter that has been one of our best producing cows.



TTFL 1701 8Y Holly 2004

Heifer

Consigned by: Friesz Livestock

Reg. #P44133432

BIRTHDATE: 2/22/20

Sire: NJW 73S W18 HOMEGROWN 8Y ET
 PW VICTOR BOOMER P606
 NJW P606 72N DAYDREAM 73S
 NJW 94J DEW 72N

Animal: TTFL 1701 8Y HOLLY 2004
 K&B BARON 0183X
 VIN-MAR TCC BPF RED BARON 338
 VIN-MAR NANCY 810

Dam: TTFL 1559 338 HOLLY 1701
 CKP ABOUT TIME 0924
 TTFL 807 0924 HOLLY 1559
 TTFL HOLLY RED OB 807

CE	+1.6
BW	+3.7
WW	60
YW	98
MM	34
M&G	64



Lot 4: AI sire – NJW 73S W18 Homegrown 8Y ET

This is a sweet heifer out of 8Y – Ward’s most consistent producing sire – the dam is a combination of the Red Baron and About Time sires that has made some outstanding females for us. This heifer has a great disposition – she will show and make a great producing female. Photos will be posted on our Facebook page closer to sale time.



OHR Victoria’s Way 158C 50H

Heifer

Consigned by: Olson Hereford Ranch

Reg. #: Pending

BIRTHDATE: 2/25/20

Sire: OHR MDK DAKITCH DELUXE Z14 80E
 TH 133U 719T UPGRADE 69X
 MOHICAN KAREN Z14
 ANL 35U VICTORIA 59X

Animal: OHR Victoria’s Way 158C 50H
 TH 122 71I VICTOR 719T
 TH 49U 719T SHEYENNE 3X
 TH 23S 103R DUCHESS 49U

Dam: OHR SHEYENNE 17W 158C
 CIRCLE-D 22H PACMAN 32P
 ANL R 32P MINDY 17W
 ANL R 36N MINDY 30S

CE	-4.3
BW	+3.1
WW	58
YW	93
MM	34
M&G	63



Grandmother donor Z14



50H



Lot 5 sire: 80E

One of our top heifers for 2020, Victoria has good performance, length and a very attractive look. Dam is a very nice Sheyenne daughter with 102 WWR on her calves. Sire is our great Deluxe bull from our topo donor Z14 who has a 105 WWR on her calves. She produced our top selling heifer last year and a high selling bull in our Red Power Sale! Victoria is in the top 10% of breed for Milk and M&G. She traces twice to great female sires P606 and 719T so she should make a great cow!

Watch for a video of her at www.olsonredpower.com.



TTFL 1601 203D Ruby 2012

Heifer

Consigned by: Friesz Livestock

Reg. #: 44133428

BIRTHDATE: 2/27/20

Sire: NJW 76S 27A LONG RANGE 203D ET
 NJW BW TRAILDUST 161L
 NJW 55N STARDUST 76S
 NJW 57G SPIRIT QUEEN 55N ET

Animal: TTFL 1601 203D RUBY 2012
 TH 22R 16S LAMBEAU 17Y
 TTFL 1228 17Y LAMBEAU 1405
 TTFL MS VICTOR 719T TIME 1228

Dam: TTFL 1403 1405 RUBY 1601
 VIN-MAR TCC BPF RED BARON 338
 TTFL 910 338 RUBY 1403 (P43526609)
 TTFL JANES PURPLE MILSAP 910

CE	+4.3
BW	+1.8
WW	55
YW	93
MM	26
M&G	53



Lot 6 sire: NJW 76S 27A Long Range 203D ET

This is a fancy short marked, dark red heifer sired by another great Ward sire. The dam side goes back to our Jane family that has been the foundation to many of our great producing females we have in our herd and sold in prior Mile High Sales in Denver.



DF Heather 4H ET

Consigned by: Donnelly Farms

Heifer

Reg. #: 44179739

BIRTHDATE: 3/11/20

Sire: SHF WONDER M326 W18 ET
 NJW 73S W18 HOMETOWN 10Y ET
 NJW P606 72N DAYDREAM 73S
 NJW 135U 10Y HOMETOWN 27A
 THM DURANGO 4037
 Animal: NJW 4037 34S DURANGO VACA 135U
 NJW P606 80L DAYDREAM 34S ET
 DF HEATHER 4H ET
 NJW 1Y WRANGLER 19D
 AH JDH CRACKER JACK 26U ET
 CRR D03 VIOLET 349
 Dam: NORDS TARA 725E ET
 LSW WCC ABOUT TIME X06
 BCC TARA 457B
 BCC MISS MAYBARRY 013X

CE	+1.9
BW	+3.2
WW	55
YW	86
MM	23
M&G	50



Nord's Tara 725E - Dam of 4H

This is our first flush mating out of our Donor Nord's Tara, and we couldn't be more pleased with what 27A produced here. A smooth, thick, yet extended made dark colored heifer with lots of performance and growth to go along with it. One you will appreciate for her productivity once becoming a cow due to her pedigree.



WR Kermit 10H ET

Consigned by: Wollmuth Ranch

Heifer

Reg. #: P44182058

BIRTHDATE: 3/22/20

Sire: CIRCLE-D WRANGLER 832W
 NJW 1Y WRANGLER 19D
 NJW FROSTY 1Y
 AH JDH CRACKER JACK 26U ET
 SHF INTERSTATE 20X D03
 CRR D03 VIOLET 349
 KJ 2410 VIOLET 392F
 Animal: WR KERMIT 10H ET
 REMITALL BOOMER 46B
 PW VICTOR BOOMER P606
 PW VICTORIA 964 8114
 Dam: KBCR P606 MS DOM 618
 CMF 103T VICTOR 262D
 KBCR 262D MS DOM 101
 KBCR 19D MS DOM 973

CE	-1.1
BW	+4.1
WW	48
YW	76
MM	24
M&G	48



Follow Wollmuth Ranch on Facebook for video and pictures closer to sale.



OHR Dude 6032 CT 136H

Consigned by: Olson Hereford Ranch

Steer

Reg. #: Pending

BIRTHDATE: 4/05/20

Sire: TH SHR 605 57G BISMARCK 243R ET
 KJ 471T BORDER 679Z ET
 KJ HVH 33N RADISSON 471T ET
 DAKITCH MDK CARETAKER 51B
 HARVIE TRAVELER 69T)
 MS MAKITCH MACK LIZ 28W
 MS MAKITCH MACK LIZ 99S
 Animal: OHR Dude 6032 CT 136H
 KJ 968R POLLED SOLUTION 668ZET
 KJ 482Y SOLUTION B003 ET
 KJ 274S ROXY 482Y ET
 Dam: CKP LOLITA 6032
 HARVIE DAN T-BONE 196T
 CKP 196T LOLITA 2080 ET
 BSB 28E LOLITA L3

CE	-3.9
BW	+5.1
WW	64
YW	101
MM	25
M&G	56



Very good April steer with flawless structure, good muscle shape and a clean front end. He also has a great disposition and very good hair for a Hereford. With good performance and carcass traits in his sire and dam, he should be very competitive. See video end of November at: www.olsonredpower.com.



North Dakota
Livestock Alliance
 ndlivestock.org

The North Dakota Livestock Alliance (NDLA) brings agriculture together to support, enhance, and promote livestock in North Dakota.

Welcome to the 2020 North Star Classic

Visit ndlivestock.org and like us on Facebook and Twitter to learn more



www.farmforum.net
 P.O. Box 4430 • 124 S. Second St.
 Aberdeen, SD



CHRISTY ORWIG
 Advertising Director
 p: 605-622-2250
 e: corwig@abardeennews.com



LYNDE ROSS
 Farm Forum Sales Manager
 p: 605-622-2257
 e: lross@farmforum.net



STEPH BINGER
 Serving Central & Eastern ND
 & Western & Central MN
 p: 605-460-0819
 e: sbinger.farmforum@outlook.com



BRITNEY BULSON
 Inside Sales, Auctions,
 Livestock, Retail
 p: 605-622-2223
 e: bbulson@abardeennews.com



JUDY EWART
 Serving Aberdeen Area
 p: 605-622-2267
 e: jewart@abardeennews.com



LYNNETTE CROUCH
 Serving Northern ND,
 MT & Canada
 p: 701-838-7076
 e: mimber@minot.com



ALVIN CROUCH
 Serving Northern ND,
 MT & Canada
 p: 701-240-1326
 e: farmforum@sr.com



JEANNIE TREVETT
 Serving Northeast SD
 Western MN
 Southeast ND
 p: 605-622-2226
 e: jtrevett@farmforum.net



MONTE HANSON
 Serving Aberdeen Area
 p: 605-622-2259
 e: mhanson@abardeennews.com



JOLYNN PODOLL
 Inside Sales, Auctions,
 Livestock, Retail
 p: 605-622-2274
 e: jpodoll@abardeennews.com



TIM ZEEB
 Serving Southeast SD,
 Northwest IA & Northeast NE
 p: 605-261-5909
 e: tzeeb@abardeennews.com



KALI HOLT
 Advertising Account Specialist
 and Digital Media
 p: 605-730-1870
 e: kholt@farmforum.net



MITCH LEINEN
 Serving Northeast SD
 p: 605-622-2276
 e: mleinen@abardeennews.com



JULIE LILLIS
 Serving Aberdeen Area
 p: 605-622-2273
 e: jlillis@abardeennews.com



DEE MCKIBBEN
 American News Sales Mgr
 p: 605-622-2252
 e: dmckibben@abardeennews.com



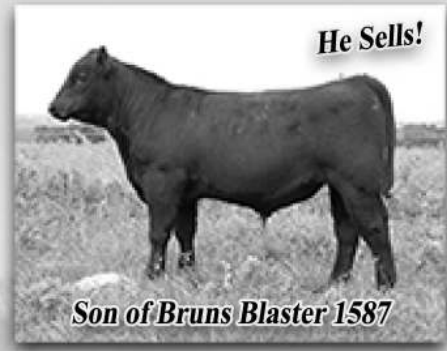
WANDA SCHAEFER
 Serving Aberdeen & Central SD
 p: 605-622-2249
 e: wschaefer@abardeennews.com

“GOING GREEN SINCE 1966”

Sprunk Erdmann

10th Annual Joint Production Sale

Friday February 26th, 2021 | 1:00 pm CDT at the Ransom County Fairgrounds, Lisbon ND



Other sires represented in our herds: Mogck Entice, Musgrave Exclusive, Connealy Blackhawk
Connealy Courage 25L and Werner Flat Top 4136

Contact us today to be put on our mailing list!

Dale & Dana Sprunk & family

Chaffee, ND

Dale 701-238-5432

sprunkangus@gmail.com

Jeremy & Stacy Erdmann & family

Lisbon, ND

Jeremy 701-680-2937

erdmannangus@gmail.com

Welcome everyone to Valley City and the 2020 North Star Classic!

VitaCharge

THE *Smoothest* WAY TO PROTECT AND RECOVER



Vita Charge® Gel

SAME INGREDIENT PROFILE WITH
ADDED CARROT POWDER FOR
PALATABILITY AND COLOR.

A gel for all species of livestock that
supports digestive health and
promotes feed and water intake
during times of stress and recovery.



Vita Charge® Clench Gel NEW PRODUCT!

A gel for all species of livestock ideal
for use during diarrhea and scours
treatments to support recovery,
hydration and nutrient absorption.



Vita Charge® Climate Control Gel

SAME INGREDIENT PROFILE AS SURE CHAMP® CLIMATE
CONTROL WITH ADDED BLUE VEGETABLE POWDER FOR
COLOR.

A gel for all species of livestock formulated to help
overcome the challenges of both changes in
environment and extreme temperatures by helping
maintain the animal's normal body temperature.

Contact us today! Bar E Feeds Jeremy & Stacy Erdmann 701-680-2937

Annual
SALE
at the
RANCH



**DALLY
ANGUS
RANCH**
Two miles east of Montpelier, ND

Feb. 27, 2021 • 1 p.m. CT
Lunch at noon

25 yearling Angus bulls for sale!
Angus GS tested • No creep feed
Free keep and delivery

A.I. SIRES:
Stevenson Big League 70749
BUBS Southern Charm AA31
MOGCK Entice
Baldrige Bronc



For more information or a catalog:
WADE & BRISTOL DALLY
701-489-3264 • Cell: 701-269-8759
E-mail: wdally@daktel.com



CENTRAL PLAINS
 AG SERVICES

Aneta
 Cooperstown
 Courtenay
 Hannaford
 Luverne
 McVille

Grain ~ Agronomy ~ Fertilizer ~ Financing
 866-753-7665
 www.centralplainsag.net

Download our free app from the App or Play Stores

DACOTAH BANK


*Here for you.*SM

BANKING • INSURANCE • MORTGAGE • TRUST
 Valley City • 240 3rd Street NW • (701) 845-2712
 dacotahbank.com

Insurance and Trust not FDIC Insured. FDIC

VC VET

Valley City Veterinary Hospital, P.C.



valleycityvet.com
 valleycityvet@yahoo.com
 701-845-3662
 1068 4th St. SW
 Valley City, ND 58072



*NSC booklet
 layout &
 design by:*

LONG RANCH
 DESIGN

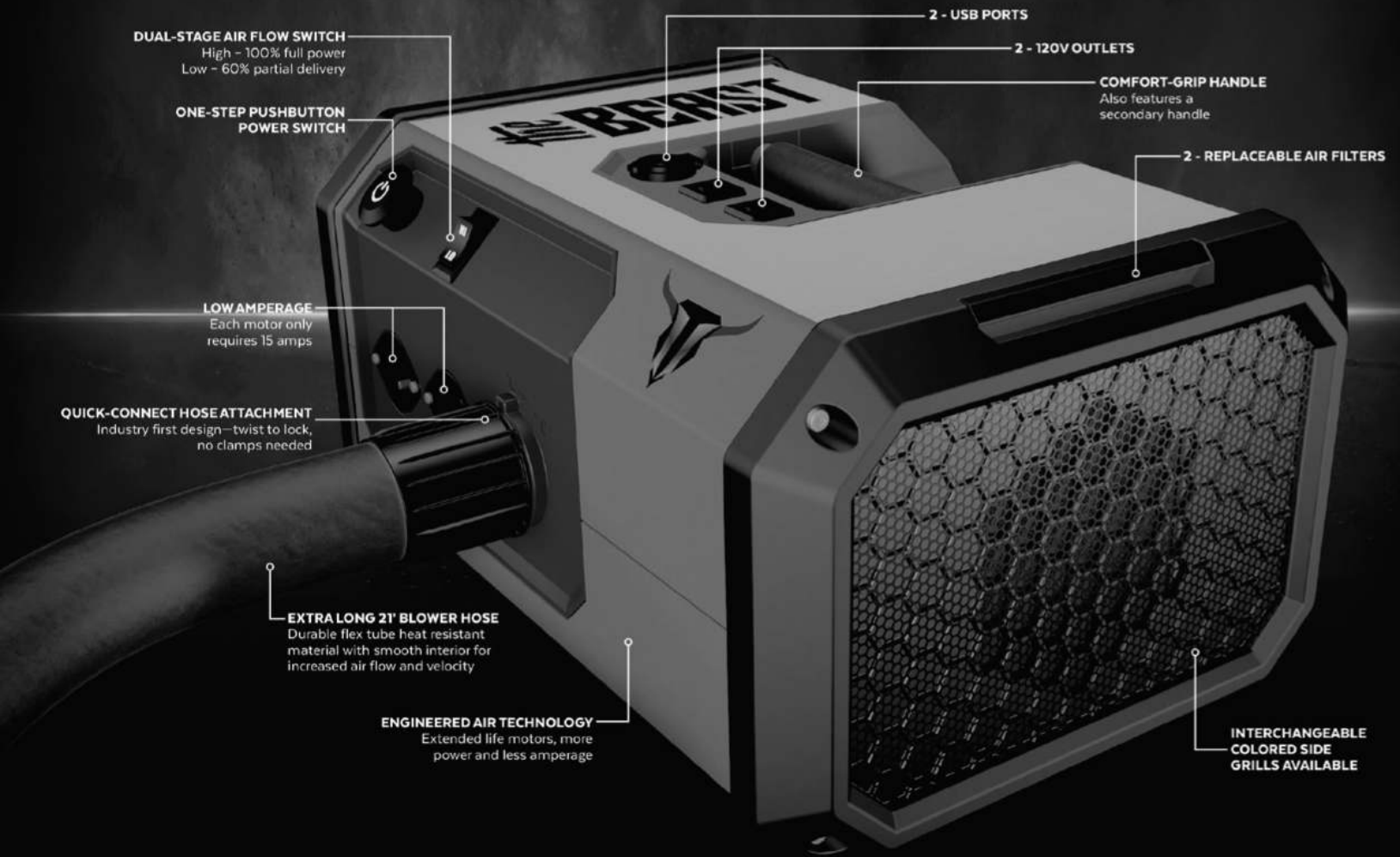
Desktop Publishing/Graphic Design
 Flyers • Posters • Newspaper Ads
 Postcards • Business Cards
 Newsletters • Booklets
 Brochures • Pamphlets
 Resumés • Signs • Invites • Programs
 Customized Stationery
 Personalized Memorial Cards
 Facebook Covers / Ads / Events
 Create Content &
 Manage Facebook Pages

Susan R. Long / Berlin, N.Dak.
 701-883-4488
 ranch.artist@gmail.com



The Beast is a collaboration of the nation's top air flow and design engineering firms.

THE BEAST



DUAL-STAGE AIR FLOW SWITCH
High - 100% full power
Low - 60% partial delivery

ONE-STEP PUSHBUTTON POWER SWITCH

LOW AMPERAGE
Each motor only requires 15 amps

QUICK-CONNECT HOSE ATTACHMENT
Industry first design—twist to lock, no clamps needed

EXTRA LONG 21' BLOWER HOSE
Durable flex tube heat resistant material with smooth interior for increased air flow and velocity

ENGINEERED AIR TECHNOLOGY
Extended life motors, more power and less amperage

2 - USB PORTS

2 - 120V OUTLETS

COMFORT-GRIP HANDLE
Also features a secondary handle

2 - REPLACEABLE AIR FILTERS

INTERCHANGEABLE COLORED SIDE GRILLS AVAILABLE

WEIGHT COMPARISON

83lbs lighter than comparable double blower package.
Over twice the power for a single Air Express III, yet only 4lbs heavier.



SULLIVAN SUPPLY

COMING SOON

Dunlap, IA | Hillsboro, TX | Lodi, CA | Hillsboro, OH
800-475-5902 • www.sullivansupply.com

FOR FINE DINING & ENTERTAINMENT
COME TO THE EAGLES CLUB



MEETING ROOMS AND
BANQUET FACILITIES AVAILABLE
DINING ROOM OPEN: TUES. – SAT. ~ 5PM TO 9PM
LOUNGE OPEN: 11AM TO 1AM

Eagles Aerie 2192

345 12th Avenue NE
Valley City, ND
701-845-2192



Where Quality & Service Count

Chris Triebold

701-840-7320

ctriebold@hotmail.com



Distributing

Westway
FEED PRODUCTS

Where solutions flow.®



MINNESOTA
SELECT SIRES CO-OP, INC.



7AN521 BLUEPRINT

Confidence Plus x Sierra Cut

- Exceptional phenotype with the combination of EPDs and genomic profile indicating a balance of traits for maternal performance and end-product merit.
- Rich in pedigree from years of stacked genetics for functional cattle who perform in every segment.



7SM80 WIDE RANGE

Graduate x In Dew Time

- Expect deep-bodied, stout-made bulls and females with his daughters having great udder quality.
- WIDE RANGE is the 14th registration sire in the entire breed!
- 3/4 SM 1/4 AN

Sponsoring two \$300 semen credit certificates:

1. Open Show Champion Angus Heifer
2. Junior Show Champion Angus Heifer

Andrew Swanson
Beef Program Specialist | 507.829.4133

Gordy Keranen
Account Manager, North Dakota | 218.841.0996

Connect with one of our local team members
today to plan for your next generation

800.795.1233 | www.selectsiresbeef.com

Visit Valley City



The Most Beautiful Town in North Dakota



Scenic Bridges VALLEY CITY, ND

Rosebud Visitor Center
250 Main St.
Valley City, ND



888-288-1891



HelloValley.com

Stay connected
with NDWS



Follow us on Facebook:
North Star Classic
North Dakota Winter Show



Find us on Instagram:
NDWinterShow



The Region's Choice

for livestock industry news

- ✓ Weekly Agriculture newspaper
 - Livestock Market Reports
 - Current Beef News
 - Production Sale Service
 - Design and printing service
- ✓ Cattle Business Herd Reference Guide
 - Top Ten Industry Leaders
- ✓ Special Sections
 - Range & Pasture Journal
 - S.D. Angus News
 - Charolais Country



Donnie Leddy
Stockholm, SD
(605) 695-0113



Jim Scheel
Alpena, SD
(605) 545-1521



Ryan Casteel
Sturgis, SD
(605) 423-6000



Tony Heins
New Salem, ND
(701) 400-4435



Wyatt Schaack
Wall, SD
(308) 202-0004



Andy Rest
Billings, MT
(406) 670-5678

THE CATTLE BUSINESS WEEKLY

605-859-2022 • Philip, SD

www.cattlebusinessweekly.com



Stay ahead of the herd,
Think Forward.

Serving farmers and ranchers since 1927

BANK >>
FORWARD

INSURE >>
FORWARD

430 W Main St | Valley City | 701.845.1220 | bankforward.com

SALE TERMS AND CONDITIONS

TERMS: The terms of the sale are cash. Checks are accepted. Settlement must be made with the clerk immediately after the sale. No animal will be released until a paid receipt is shown to the sales manager.

DISPUTES: All disputes as to bids and bidder shall be final and shall bind both consignor and purchaser to the announcement of sale and sale price.

LIABILITY: Each animal will be the buyer's risk as soon as sold and settlement must be made at the completion of the sale. All persons attending these sales do so at their own risk. The Breed Associations, sales managers, directors, clerk, and North Star Classic management assume no liability, legal or otherwise, for their safety or the behavior of the animals.

HEALTH: All livestock will be accompanied by proper health certificates for immediate shipment.

REGISTRATION & TRANSFER: All purebred livestock sell with registration certificate and will be transferred to new owner in accordance with the respective national breed associations.

ANNOUNCEMENTS from the auction box will take precedence over the printed matter in this catalog.

BREEDER GUARANTEE: All animals sold are guaranteed breeders by the owner. Females in calf are considered breeders without further guarantee. All females sold are guaranteed to be breeders. Each owner accepts the responsibility of guarantee of his own animals and has the privilege of giving additional guarantee on his livestock at the time of their sale in the auction ring. All complaints regarding breeding difficulties must be reported in writing by the buyer within the time limit of the respective breed association and any animal returned must be free from disease and in good condition.

BUYERS UNABLE TO ATTEND may send their bids or buying instructions to the sale manager or auctioneer prior to the sale.

ADDITIONAL TERMS and conditions will vary with the different breed associations. For additional information on this, please contact the respective association.

DISCLAIMER: Special care has been taken to insure accuracy in the matter of pedigrees and information included in this catalog, but we are not to be responsible for any error which may be discovered prior to the sale will be announced at the time of sale.

**Delivering value and
providing solutions... to the
beef producers in our region.**

Valley City, ND • 220 Winter Show Road SW
845-1751 or 800-900-1751

 **AgCountry**[®]
Farm Credit Services

2020 SPONSORS INDEX

AgCountry Farm Credit Service . . .50	Maple River Grain & Agronomy . . .6
American Food Groups6	ND Farm Bureau13
AmericInn34	ND Livestock Alliance42
Bank Forward Insure Forward . . .49	Paulson Farms8
Cattle Business Weekly48	RKS Sales & Service6
Central Plains Ag Service44	Rasmusson Farms8
Columbia Grain13	Schaefer Vermeer Equipment . . .13
Dacotah Bank44	Schlotman Farms8
Double Bar T Feeds46	Schmitz Family11
Eagles46	Select Sires47
Farm & Ranch Guide9	Sullivan's Supply45
Farm Forum42	Valley City Vet Clinic44
Long Ranch Design44	VC Conv. & Visitors Bureau48
Maasjo Farms13	Western Ag Reporter35

THANK YOU TO OUR 2020 SPONSORS & ADVERTISERS

2020 ADVERTISERS INDEX

AgCountry Farm Credit Service . . .50	Long Ranch Design44
American Foods Group6	Maasjo Farms13
Bank Forward Insure Forward . . .49	Maple River Grain & Agronomy . . .6
Bar E Feeds43	ND Farm Bureau13
Cattle Business Weekly48	ND Livestock Alliance42
Central Plains Ag Service44	OHR Red Angus7
Columbia Grain13	RKS Sales & Service6
Dacotah Bank44	Schaefer Vermeer Equipment . . .13
Dally Angus44	Schmitz Family11
Double Bar T46	Select Sires47
Eagles46	Sprunk Erdmann Prod. Sale43
EconoLodge13	Sullivan's Supply45
Farm & Ranch Guide9	Valley City Vet Clinic44
Farm Forum42	VC Conv. & Vistors Bureau48
Hoffmann Angus Farms12	Western Ag Reporter35




North Dakota Winter Show
PO Box 846
Valley City, ND 58072-0846

PRSRTD STD
US POSTAGE
PAID
UNITED PRINTING



★ SEE YOU AT THE NSC! ★



 Follow us on Facebook:
North Star Classic
North Dakota Winter Show

 Find us on Instagram:
NDWinterShow

PLEASE BRING CATALOG TO EVENT. QUANTITIES ARE LIMITED.